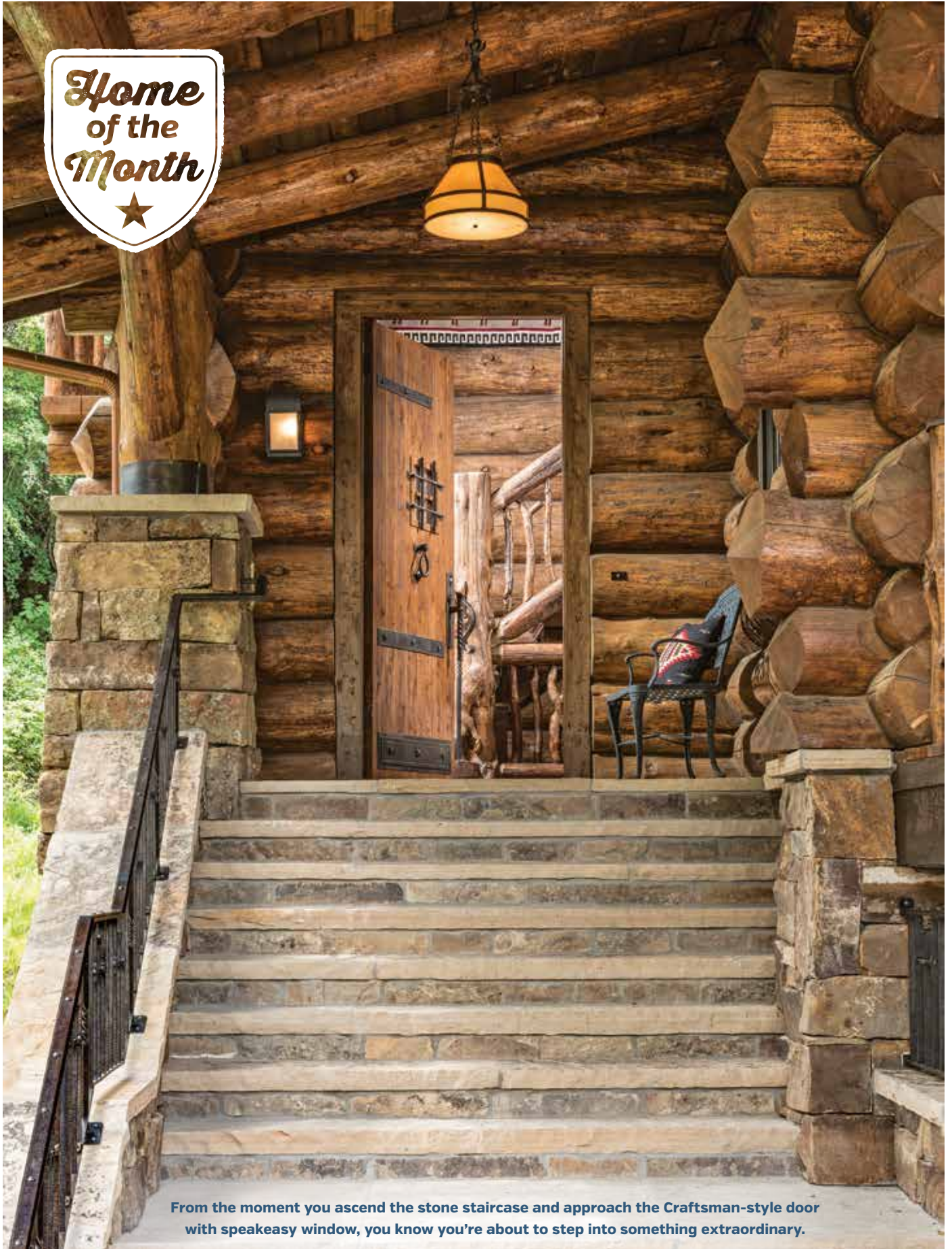


*Home
of the
Month*



From the moment you ascend the stone staircase and approach the Craftsman-style door with speakeasy window, you know you're about to step into something extraordinary.

Beauty to Behold

In Vail, Colorado, log structures are quite common. But this completely customized dream log home stands apart from the crowd.

story by **Brooke Fishel** | photography by **Heidi Long**



Bald Mountain and Gore Range provide a stunning backdrop to this five-bedroom, 4 1/2 bath home.



The home is wired for entertainment and convenience with 4K TVs in all the bedrooms. However, Adam was firm that the great room should be TV-free and allow for people to truly connect with each other in front of a roaring fire.



Simply calling this log home in Vail, Colorado, custom-built doesn't do it or the design/build process justice. From the stains specially created for the home's interior and exterior wood to the delicate care taken to bring out the full beauty of the logs, this is a true showpiece down to the smallest detail.

With their land purchased and an initial draft of the floor plan sketched, Adam and Ana Bersin contacted Brad Neu of Kalispell Montana Log Homes to begin the process of building their dream home. Brad brought Gabe Butler of Montana Log Homes of Colorado and designer Jake Henry of Jake's Drafting Service onto the project.

"We started with the initial plan and through discussions with Adam, we were able to come up with a floor plan and conceptual elevations that met his vision of building a 'big cabin in the woods,'" Jake explains.

The result is Highcliffe Lodge, a stunning five-bedroom, 4 1/2 bath home located just minutes from the heart of Vail Village and the area's world-famous ski slopes.

Adam knew exactly what he wanted and was very much a part of the design process. "He provided a lot of input and ideas that worked great for the home," said Kent Olsen with Specialty Woodworks Co. who did much of the woodwork, including the kitchen cabinets, interior and exterior doors and the entire trim package in the house.

The meticulous care taken throughout the process started with the standing-dead lodgepole pine logs used to construct the shell. The logs — 16 inches in diameter on average —

The bright and open kitchen is a chef's dream with its large gas range, eat-in island and high-end features like the Herbeau oil-rubbed bronze kitchen sink faucet. William Wunderlich, a friend of the Bersins, was a huge help with layout configuration ideas and the selection of the Brazilian quartzite countertops.





“Every log was handled with kid gloves so that the natural beauty of the wood wouldn’t be compromised,” says log home manufacturer Brad Neu.

were hand-treated with an Osborn buffing brush to create a smooth, natural finish without peeling or marring the wood fibers. “Every log was handled with kid gloves so that the natural beauty of the wood wouldn’t be compromised,” explains Brad.

Adam and Kent then experimented with custom-crafted stains for the exterior logs until the perfect color was achieved — a mix of raw umber and water.

The umber color was continued inside but mixed with an oil-based wiping stain for the antiqued white oak cabinets in the kitchen. A darker gunmetal stain with a crackle and worm-track finish was created for the kitchen island and handmade hutch. Brazilian quartzite countertops, La Terre Deco tile from Exquisite Surfaces and a custom-built iron stove hood by Craig May from Dragon Forge Ltd. complete the polished look.

Craig’s hand-forged art also can be found in other areas of the house, including the railings, front door hardware and fireplace doors in the great room, as well as in the powder room’s metal countertops and the bar on the lower level.

The attention to detail is also evident in the bathrooms, featuring fixtures from Kallista’s “One Collection” in a gunmetal finish, antique terra cotta hexagon tiles on the floor and hand-made Pratt & Larson tiles in different colors and textures for each room.

The home’s personality and beauty continue with treated French oak flooring on the main level changing to buffed limestone floor-



ABOVE, LEFT TO RIGHT: The fixtures for all of the bathrooms were selected from Kallista’s “One Collection” in the gunmetal finish. Adam wanted to keep the look consistent throughout the entire home, but made each room unique by changing up the sink styles. • The shower’s variegated green handmade tile boasts whimsical reliefs ranging from trees to moose to turtles. • The master bath features a copper Japanese-style soaking tub that’s exceptionally deep for total-body submersion. • The woodwork’s rich shade of brown allows the cool whites and grays of the stone countertop and the creamy-beige textured walls to stand out. Illuminated by candle sconces, the combination is at once masculine and feminine.

More Than Just a Pretty Face

This home isn’t only beautiful, it’s energy-efficient. According to owner Adam Bersin, it was the first log home to pass Vail’s stringent energy standards. It was designed to the 2012 IRC and IECC with Town of Vail modifications, including:

- Windows are better than the required U-value of 0.35 at 0.30
- Ceiling and wall R-values meet or exceed code
- Basement walls below grade exceed the R-15 or R-19 values at R-10+R-13
- Basement walls above grade exceed the R-21 requirement at R-23
- Sub-slab insulation meets the required R-10 value
- Air infiltration is better than the Town of Vail amendment of less than 3 ACH50 – a big accomplishment for a log house!

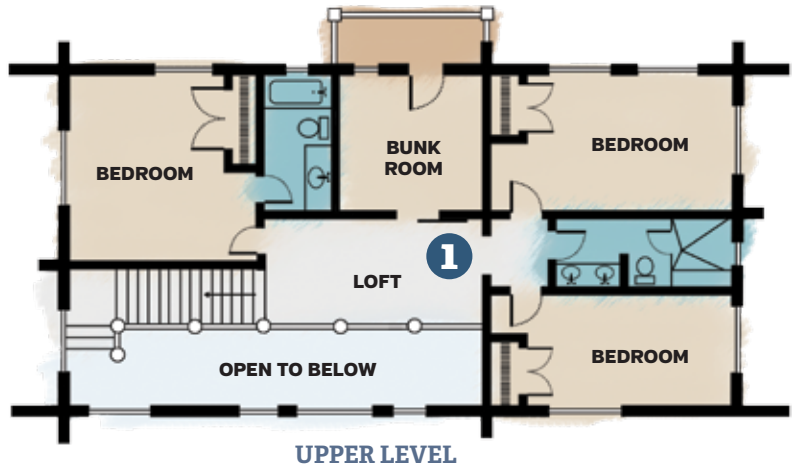




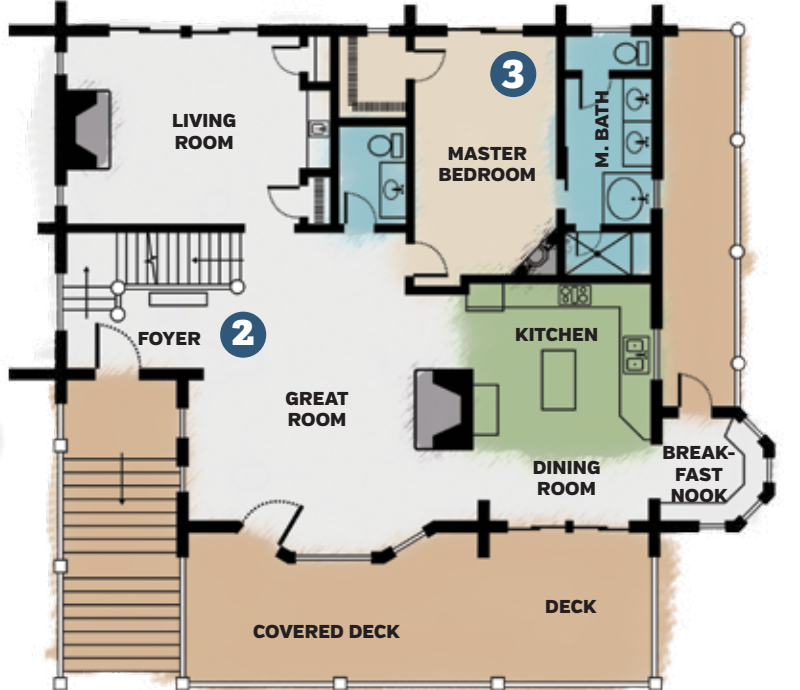
BELOW: When Adam and his wife Ana aren't staying at the home themselves, other families can enjoy the beautiful view from the outdoor fire pit, water wall and hot tub on the back deck by booking it through a popular vacation rental site.



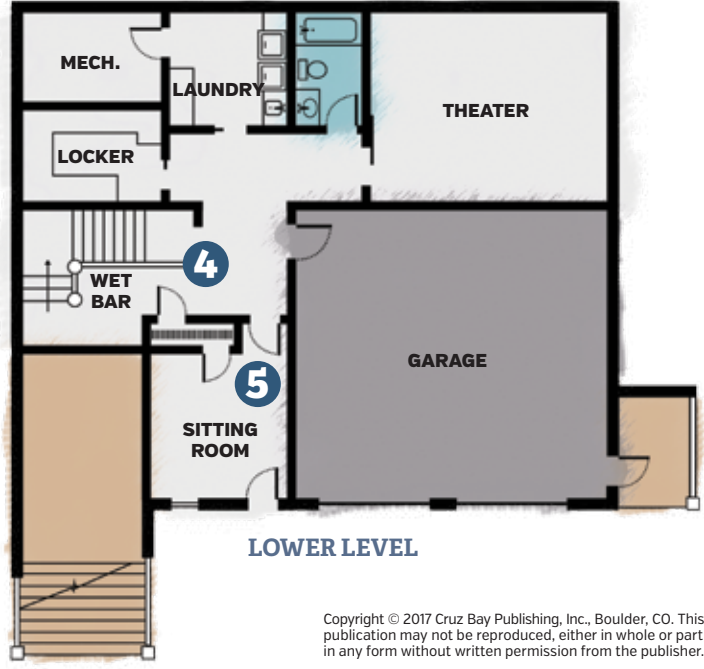
WWW
 Want to check it out yourself? You can stay at Highcliffe Lodge. Info and more photos at: highcliffelodge.com



UPPER LEVEL



MAIN LEVEL



LOWER LEVEL

Copyright © 2017 Cruz Bay Publishing, Inc., Boulder, CO. This publication may not be reproduced, either in whole or part, in any form without written permission from the publisher.

ing and real-stone veneer walls on the lower level with a wet bar tucked beneath the stairs and framed by character posts sourced from the Steamboat Springs area.

And for the movie lover, there is also a state-of-the-art cinema room with 4K projector, 11.1 ATMOS sound system and reclining leather seating for five.

The home may be just minutes from the amenities of bustling Vail Village but once you see all this home has to offer, there really is no need to leave ... except to maybe hit those slopes. **L**



HOME DETAILS

Square Footage: 5,000

Bedrooms: 5

Bathrooms: 4 full, 1 half

Log Provider:

Kalispell Montana Log Homes

1: The writing nook on the upper level features one of several custom-designed antler lights – including elk and several species of deer – with a polo-antiqued finish by Jeff White of Little Big Horns.

2: The first two stairs leading up the staircase were chiseled from large slabs of moss rock weighing more than two thousand pounds. The steps transition to reclaimed beams with custom-milled oak treads. This creates durability which stands up to wear and tear from ski boots during the winter.

3: The interior walls in the home, like the ones found here in the master bedroom, are full-log walls – not framing with log siding. Some are shaved to incorporate drywall elements or create a recessed nook where the cabinets transition to the surrounding log walls.

4 & 5: The walls on the lower level are real stone veneer that extends to the wet bar tucked beneath the stairs. The bar has the same Herbeau oil-rubbed bronze faucets found in the kitchen and a hand-forged metal bar top. The unique character logs found throughout the Bersins' home give this large residence unparalleled charm.

